



## REVERSIBLE USB-A 1337

Which way up? Your choice

IFPL has designed the 1337 with customer experience and reliability at the heart of the design of the unit. The 1337 leverages our successful 1281 USB Jack.

A key differentiator of the 1337 is bi-directional insertion, which means that whichever way round the passenger tries to insert their USB connector they will always get it right. This feature significantly helps to minimise Customer Induced Damage (CID), which can be costly for any airline.

The 1337 delivers USB-A compatible power at 1.5A (max) and 5V DC, enabling charging of PEDs including, but not limited to, Apple, all Android and Windows devices, in addition to supporting BC 1.2 and Chinese Telecommunications Industry Standard YD/T 1591-2009.

The soft light guide delivers an even spread of light with a low energy input, ensuring that passengers can easily identify, locate and insert their USB plug.

Both the soft light guide colour and decal print are customisable, allowing airlines to reflect their brand and enhance the overall aesthetic of the cabin.

Delivering a robust and reliable USB jack is essential to ensure ongoing high levels of customer satisfaction. To this end, the 1337 has been tested to 60,000 insertions/extractions, more than 10 times the industry standard, delivering yet another cost benefit compared to a traditional unit. The 1337 has been designed with system flexibility in mind and can accept 24-36V DC input, therefore allowing a broad range of installation options.

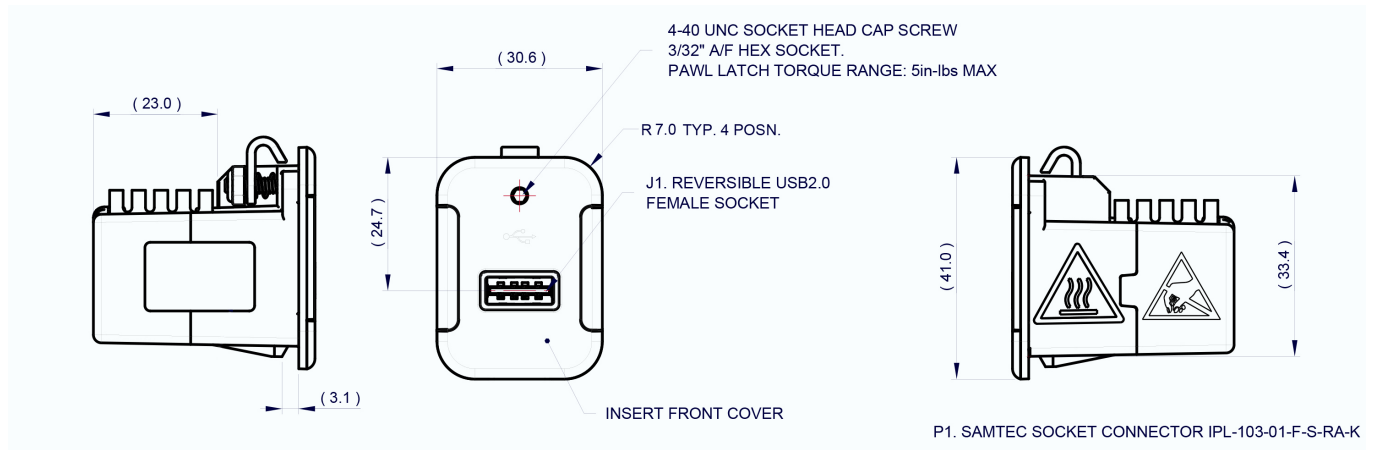
In addition, all materials used in the construction of the 1337 have been proven in service to provide durable and cost effective lifetime use. In the unlikely event of the unit requiring replacement, the 1337 has been designed for simple rapid on-wing swap-out.

### CUSTOMER SATISFACTION

- High speed data and power in one robust USB socket
- High power to support charging of tablets and smart-phones (1.5A, 5VDC)
- Soft light guide for easy location and insertion
- Reversible USB for easy bi-directional insertion

### AIRLINE PROPOSITION

- Over 10 times industry standard reliability
- Tested to over 60,000 insertions/extractions
- Bi-directional insertion, designed to minimise CID
- Easy on-wing replacement
- Customisable soft light guide and decal print to support airline branding and cabin aesthetics



# 1337 TECHNICAL SPECIFICATION

IFPL is an innovative award winning company specialising in the design and manufacture of passenger interface solutions to the global In-flight Entertainment and Connectivity (IFEC) industry.

Twice winner of the prestigious Queen's Award for Enterprise, we are unique in our ability to combine industry leading innovation with manufacturing excellence; through comprehensive in-house capability that enables our clients to work closely with us in transforming ideas, from concept to prototype and then delivered as industrialised, certified and production ready solutions.

PART		
Name	Reversible USB	
Number	1337-100-YY	
ELECTRICAL CHARACTERISTICS		
Input Voltage	24 to 36VDC	
Nominal Input Current	No Load	0.05A
	Max Load	0.7A
Under and Over Volt Protection?	Yes	
Output Voltage	5VDC +/- 0.25VDC	
Output Current	1.5A Nom (1.68A Max)	
Lightpipe Illumination	Luminance	30-80 Lumens
	Colour	White - configurable to your requirement on request
USB Charging Schemes Supported	USB Standard BC1.2	
	Chinese Telecommunications industry standard YD/T 1591-2009	
Reversible USB Interface	USB Type 'A' female intended for PED connection	
RJU "hot swappable"?	No	
OPERATING TEMPERATURE		
Typical	+15°C to +25°C	
Functional	-15°C to +55°C	
MECHANICAL CHARACTERISTICS		
Weight	30g Max	
Standard Colour	Black - configurable to your requirement on request	
Overall Dimensions - HxWxD	As per drawing above	
Cut Out Specification	As per Boeing Spec D620Z013-01 Section 8	
RELIABILITY		
Mean Time Between Failure	Calculated at	Over 90,000 hours (Insertions/Extractions) Tested to 60,000